

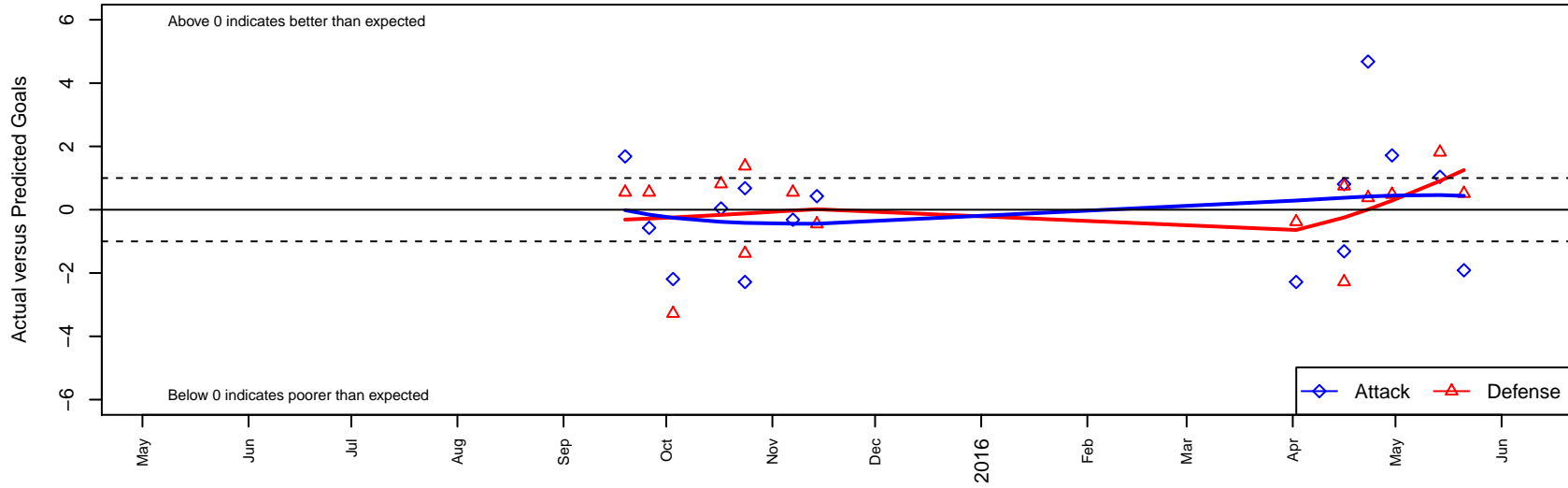
# FC Spokane Grey B 2004B

FC Spokane  
 Spokane, WA  
 B04 total strength=276  
 attack=0.22 defense=0.12  
 fall league = PSPL–Inland Div 2 U11  
 spr league = Spr PSPL–Inland Div 2 U11  
 notes= Harvey–Renz 2015

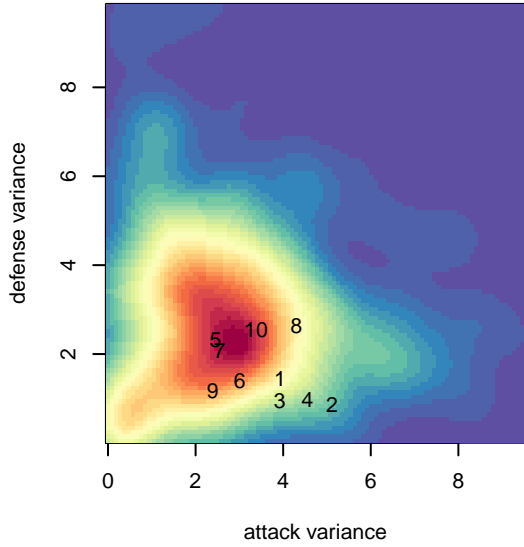
alt names used:  
 FC Spokane B04 Grey–Harvey/Renz  
 FC Spokane B04 Grey–Harvey/Renz

Venues played:  
 2015 PSPL–Inland Div 2 U11  
 2015 Spr PSPL–Inland Div 2 U11

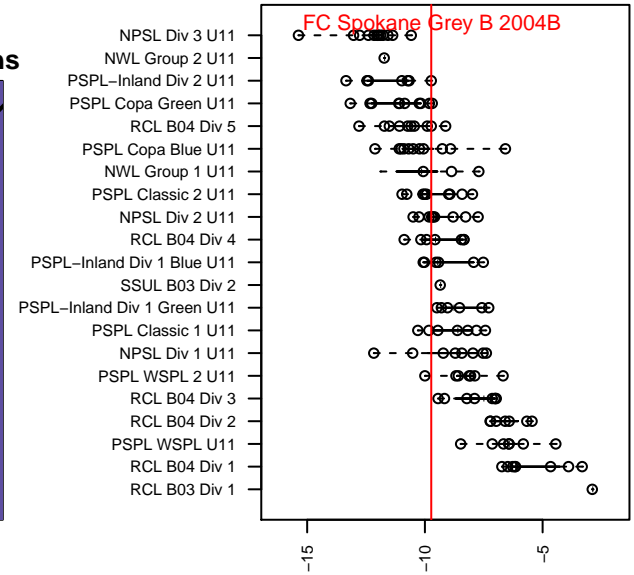
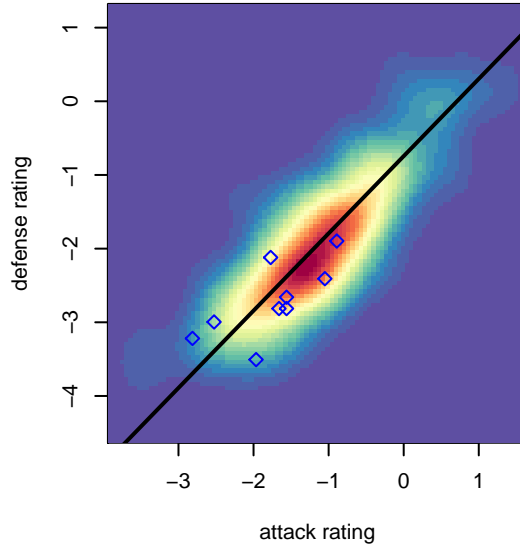
**FC Spokane Grey B 2004B**  
 Dots are actual minus expected GF (blue circles) and GA (red triangles).  
 Blue line is smoothed change in attack strength. Red is smoothed change in defense strength.



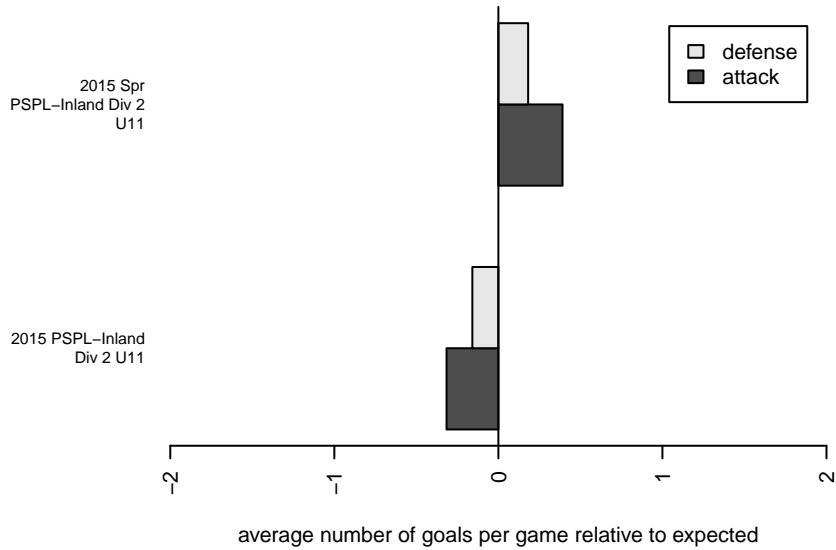
**attack and defense variance (black dot)  
relative to other teams  
and top 10 in region**



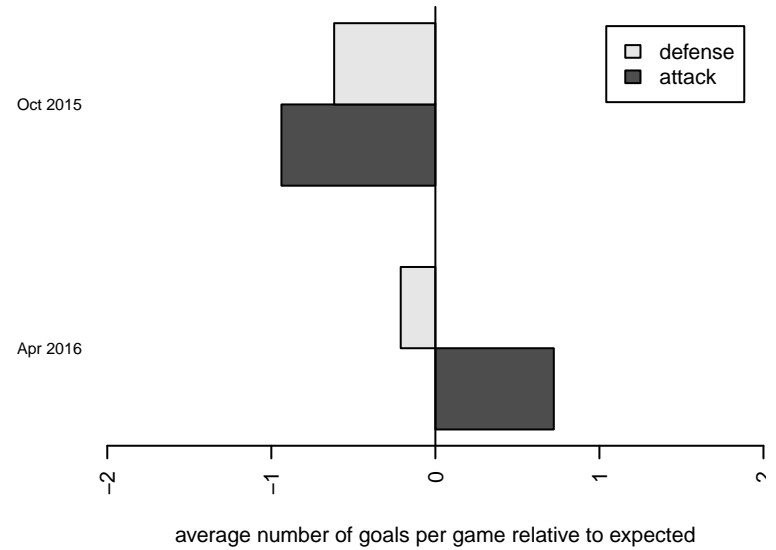
**attack and defense rating  
relative to others at age  
and all opponents in last 13 months**



**Performance relative to 13 month average**



**Performance relative to 13 month average**



<b>date</b>	<b>home</b>		<b>away</b>		<b>venue</b>	<b>pred.home</b>	<b>pred.away</b>
2016-05-21	Pullman Pumas B05	1	FC Spokane Grey B 2004B	0	2015 Spr PSPL-Inland Div 2 U11	1.51	1.91
2016-05-14	FC Spokane Grey B 2004B	4	FC Spokane Grey A 2004B	0	2015 Spr PSPL-Inland Div 2 U11	2.96	1.81
2016-04-30	FC Spokane Grey B 2004B	4	Wenatchee Valley United Rosa B04	3	2015 Spr PSPL-Inland Div 2 U11	2.28	3.48
2016-04-23	CB United Ephrata B04	1	FC Spokane Grey B 2004B	12	2015 Spr PSPL-Inland Div 2 U11	1.38	7.32
2016-04-16	FC Spokane Grey B 2004B	4	Spokane Pumas Platinum B04	4	2015 Spr PSPL-Inland Div 2 U11	3.19	1.72
2016-04-16	FC Spokane Grey B 2004B	0	Wenatchee FC Black B05	3	2015 Spr PSPL-Inland Div 2 U11	1.31	3.74
2016-04-02	Breakers Kenny B04	2	FC Spokane Grey B 2004B	1	2015 Spr PSPL-Inland Div 2 U11	1.62	3.28
2015-11-14	IEYSA Storm B04	1	FC Spokane Grey B 2004B	5	2015 PSPL-Inland Div 2 U11	0.55	4.57
2015-11-07	FC Spokane Grey B 2004B	6	Breakers Gibbs B04	0	2015 PSPL-Inland Div 2 U11	6.32	0.55
2015-10-24	Breakers Kenny B04	3	FC Spokane Grey B 2004B	1	2015 PSPL-Inland Div 2 U11	1.62	3.28
2015-10-24	FC Spokane Grey B 2004B	8	CB United Ephrata B04	0	2015 PSPL-Inland Div 2 U11	7.32	1.38
2015-10-17	FC Spokane Grey A 2004B	1	FC Spokane Grey B 2004B	3	2015 PSPL-Inland Div 2 U11	1.81	2.96
2015-10-03	FC Spokane Grey B 2004B	1	Spokane Pumas Platinum B04	5	2015 PSPL-Inland Div 2 U11	3.19	1.72
2015-09-26	FC Spokane Grey B 2004B	4	IEYSA Storm B04	0	2015 PSPL-Inland Div 2 U11	4.57	0.55
2015-09-19	Breakers Gibbs B04	0	FC Spokane Grey B 2004B	8	2015 PSPL-Inland Div 2 U11	0.55	6.32